

2021 Census population and household estimates

The Office for National Statistics (ONS) released the first results from the Census 2021 on 28 June 2022. This included population and household estimates for local authorities in England & Wales. Published figures relate to numbers as of census day on 21 March 2021.

Herefordshire’s resident population was 187,100 in 2021

This was 3,600 more people than in 2011 (up by 2.0%), which is a slower rate of growth than in England & Wales (6.6%). Herefordshire grew at a slower rate over the last decade than over the previous decade (2001 to 2011), when it grew by 4.9%.

With 86 people per square kilometre, Herefordshire had the fourth lowest population density out of all county level authorities in England in 2021 (equivalent to around two football pitch-sized pieces of land per resident).

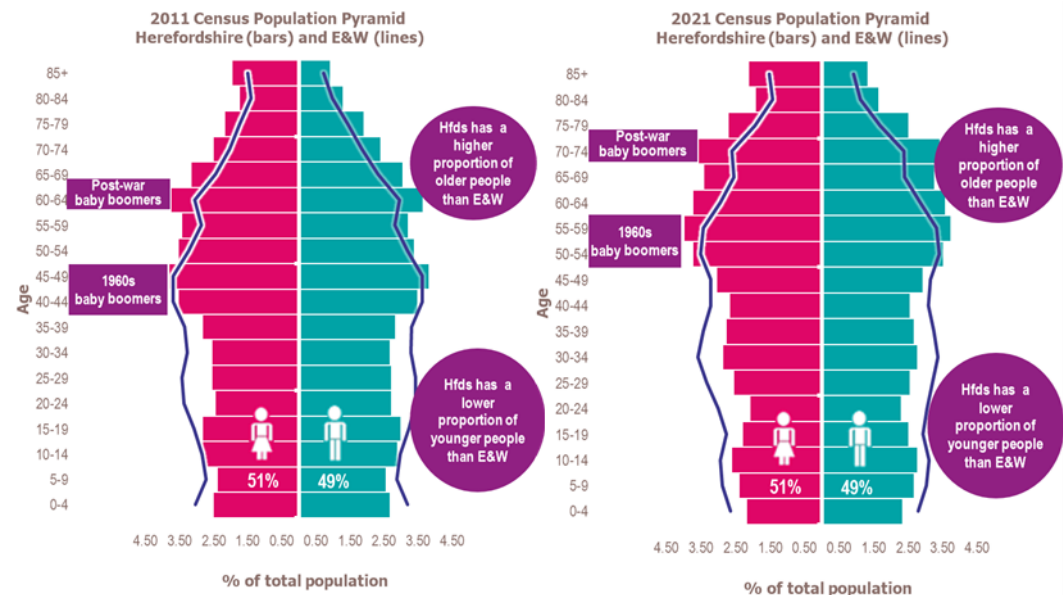
The county’s age structure remains older than nationally, and the 65 and over age group has grown the fastest

Herefordshire has higher proportions of residents in their early fifties and above and lower proportions of young people than nationally. The ‘Population pyramids’ illustrate how Herefordshire’s age structure compared with England & Wales in 2011 and 2021.

There are more females than males, reflecting the national pattern

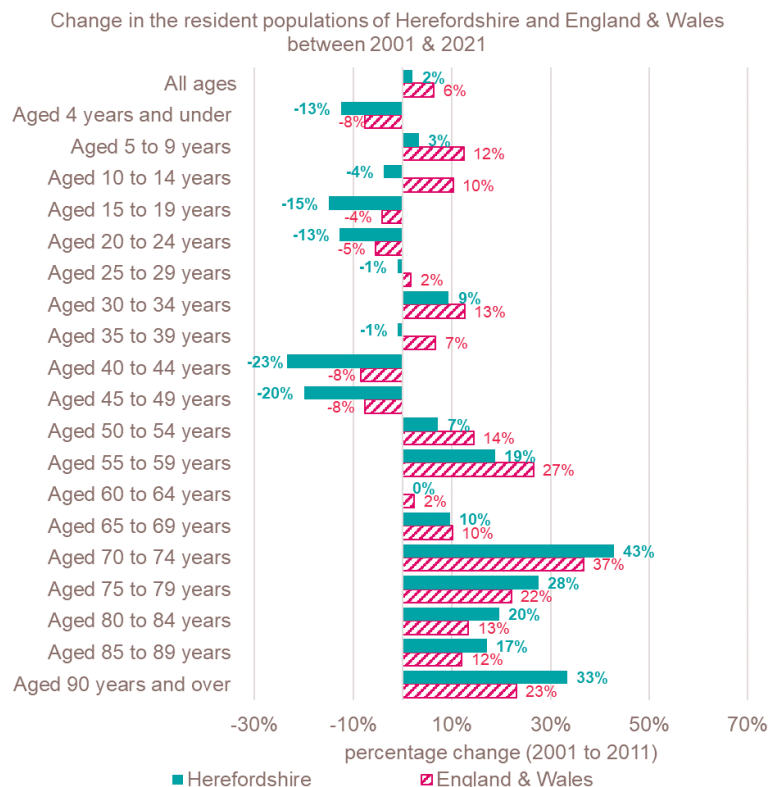
There are 97 men for every 100 women in Herefordshire (96 in England & Wales).

The voluntary Census 2021 question asked for gender at birth for demographic purposes. Statistics on gender identity will be published in later releases.



Looking at changes in the broad age groups in the county:

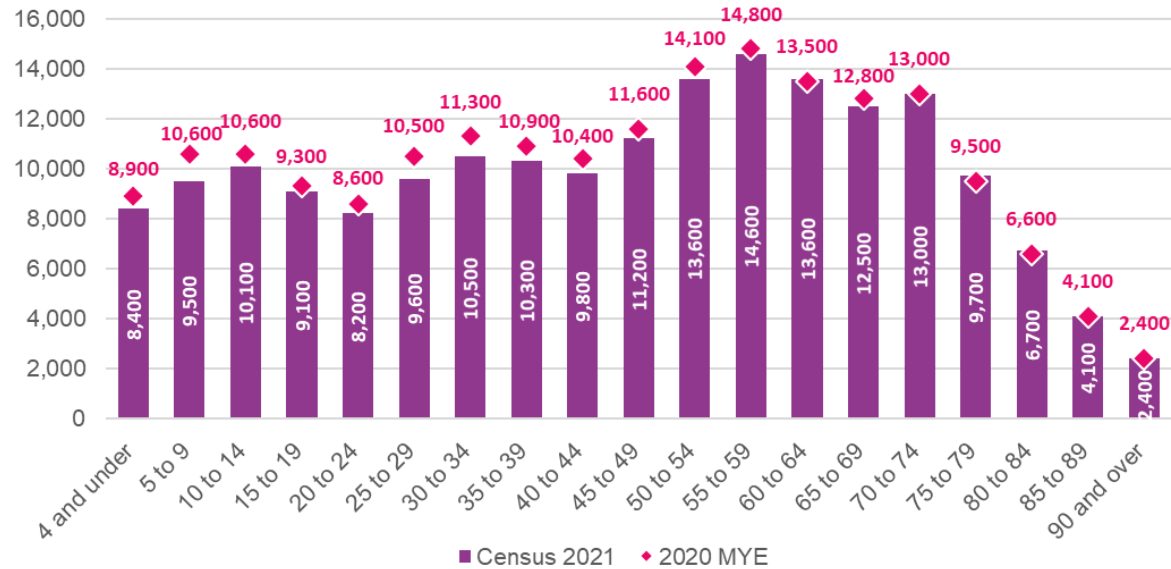
- Although there was a period of increased births from 2007 to 2013, numbers of **children aged under 15** have decreased by 4.3% over the last 10 years. This compares to a national increase of 5%.
- Despite a boost in the working age population by migration following the expansion of the European Union in 2004, the numbers of **people aged 15 to 64** have declined by 4.1% over the last 10 years (compared with a 13.6% increase nationally), as increasing numbers of ‘baby boomers’ have been moving into retirement age.
- The **65 and over age group**, on the other hand, has increased by 24.1% over the last 10 years compared with 20.1% nationally, as increasing numbers of ‘baby boomers’ have been moving into this age group.



Comparing the Census 2021 and mid 2020 population estimates

The ONS’ annual mid-year population estimates (MYEs), although not directly comparable with the Census, are the official source of population numbers between censuses. The census estimates show a much slower growth than the rolled forward mid-year estimates have indicated over the last decade. The 2021 Census population is 6,500 lower than the 2020 mid-year estimate, and initial comparisons indicate that the population for all age groups under 55 is lower than estimated (see chart on next page). We will know more when ONS publish official MYEs and plans for any revisions to previous estimates in September 2022.

Comparing the Census 2021 and mid 2020 population estimates



There were 82,800 households in Herefordshire in 2021

This was 4,500 more households than in 2011 (up by 5.7%), compared with a 6.1% increase across England & Wales.

Other information

These Census 2021 results do not include any details about births, deaths or migration for the year to 2021, which will obviously reflect the immediate impacts of the pandemic. These components will be published with the 2021 mid-year estimates, planned for release from October to the end of the year 2022. Other topics to be released before the end of the year include ethnicity, religion, the labour market, education, housing, and for the first time, information on armed forces veterans, sexual orientation and gender identity. See [First results from Census 2021 in England and Wales](#) for full details of the current release.